

## **(7-22-08) WORK PLAN FOR THE COMMUNITY ADVISORY GROUP RICHARDSON OLMSTED COMPLEX MASTER PLAN**

The Community Advisory Group is one component of the public outreach process facilitated by Bob Shibley of the Urban Design Project as part of the Richardson Center Corporation master planning efforts.

### **Mission of the Community Advisory Group (Draft Work Plan)**

Community participation is a significant and substantial component of the Richardson Olmsted Complex project effort. Public participation should serve to inform the related communities, special interest groups, and various other stakeholders about the project and serve as a means for those communities to participate in the formulation of all aspects of the plans for the Richardson Olmsted Complex. The Community Advisory Group is to help fully engage and represent other groups and individuals in the community who are not at the Community Advisory Group meetings. The goal is to ensure broad community engagement in the Master Plan process as well as to ensure potential partner understanding, support, and commitment to the proposed project.

The composition of the Community Advisory Group, its method of work, and meeting schedule, are subject to the group's deliberation. The final Work Plan will be prepared by the consultant team with help from the Community Advisory Group, and will be approved by the RCC.

### **Purpose of the Community Advisory Group**

1. Advise the RCC regarding community values related to the Richardson Olmsted Complex Master Plan.
2. Facilitate the process of broad public engagement throughout the planning process. This includes convening of the next three large public meetings as well as routine Community Advisory Group meetings.
3. Review the Master Plan products as they are produced, with public comments.

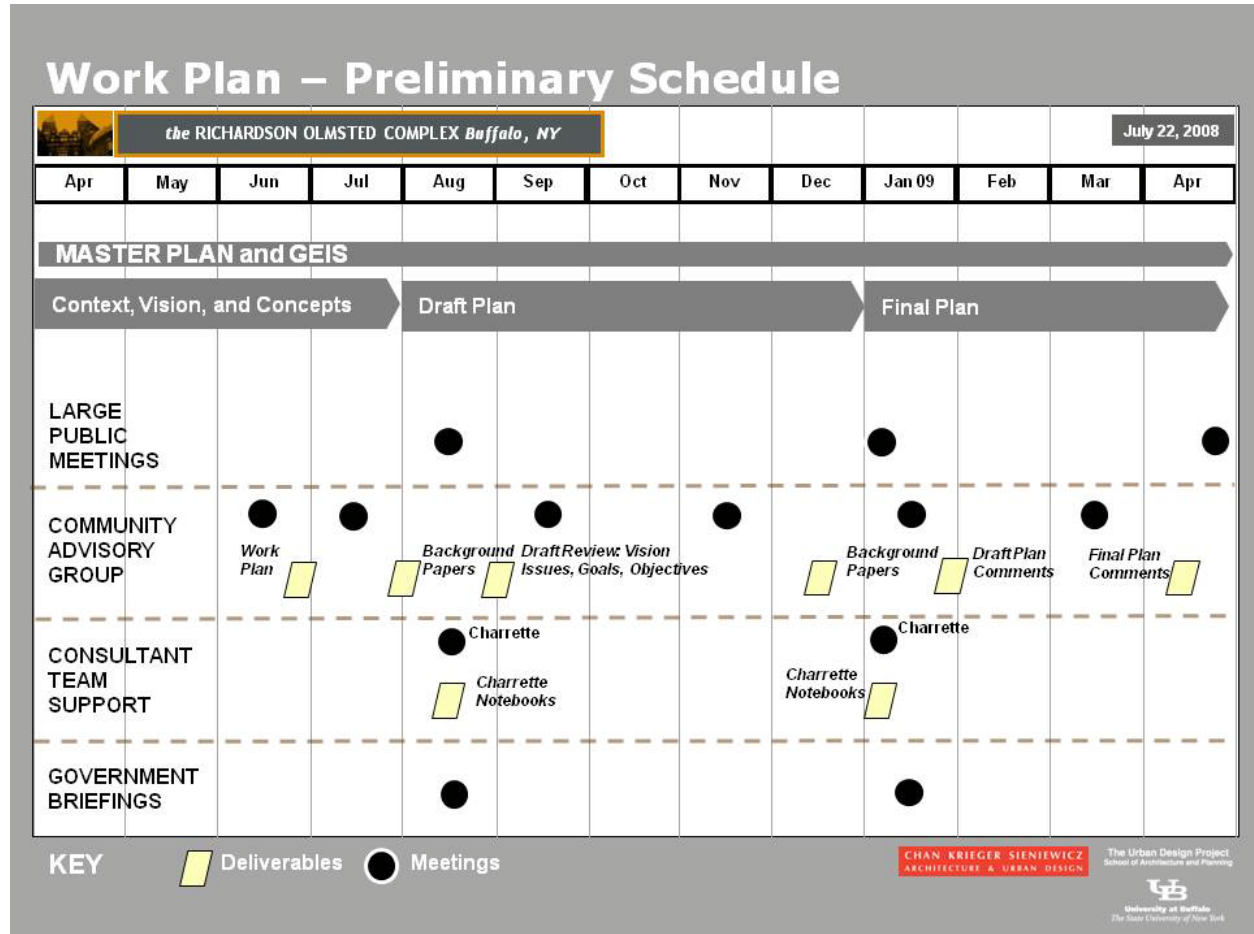
### **Method of Work**

The Community Advisory Group representatives will decide on an appropriate meeting schedule to meet its mission to solicit and account for public comment on the plan as it develops. Various mechanisms of communication should be employed to help reach out to broader audiences, with different available means of communication. The Community Advisory Group will meet as needs dictate. The initial group will manage its own growth and additional members may be included.

Work products of the Community Advisory Group will include review and feedback on the Master Plan products, a full work plan, background papers for the large public meetings, and three reports to the RCC (1 - Vision, Issues, Goals, and Objectives. 2 - Draft Plan Comments. 3 - Final Plan Comments).

## Tentative Schedule

The first Community Advisory Group meeting was held June 16<sup>th</sup> from 7:00-8:30 PM, at the Polish Cadets Hall, 927 Grant Street. Subsequent Community Advisory Group meetings will occur on the third Monday of every month in which a meeting is scheduled to be held. Three public meetings are anticipated as part of the process in addition to the public meeting held in April of 2008.



## **Composition of the Community Advisory Group**

The Community Advisory Group is comprised of a variety of representatives of the surrounding community, physically adjacent organizations, and experts with deep historical knowledge of the Olmsted Richardson Complex. There are six categories of representative groups on the Community Advisory Group:

1. Cultural Organizations that share a physical adjacency to the project area.
  - Buffalo Olmsted Parks Conservancy – Thomas Herrera-Mishler, CEO (represented by Anne Harding Joyce, Board of Trustees)
  - Albright-Knox Art Gallery – Louis Grachos, Director (represented by Elaine Pyne, Director of Advancement)
  - Buffalo and Erie County Historical Society – Dr. Cynthia Conides, Executive Director (or representative)
  - Buffalo State College – Dr. Muriel A. Howard, President (represented by Benjamin Christy, Dean of the School of Arts and Humanities)
  - Burchfield Penney Art Center – Ted Pietrzak, Executive Director (or representative)
2. The Buffalo Psychiatric Center
  - Administrative Representative – Dr. Barbara Seals Nevergold, President of Board of Visitors
  - Recipient Representative – Michael McLean
3. Community Business Organizations
  - Elmwood Village Association – Justin Azzarella, Executive Director (or representative)
  - Grant-Amherst Business Association – Max Willig, Vice-President (co-chair)
  - Grant-Ferry Association – Bob Franke, Executive Director
4. Community/Neighborhood Groups.
  - 4 The Neighbors Block Club – Gregory Patterson Tanski (co-chair)
  - Penhurst Block Club – Ray Clark
  - Black Rock Riverside Good Neighbors Planning Alliance – Richard Mack
  - West Side Community Collaborative – Harvey Garrett
  - Network of Religious Communities – Dr. Stan Bratton
5. Historic Preservation
  - Professor Frank Kowsky (Catherine Schweitzer Designee)
  - Campaign for Buffalo – Tim Tielman, Executive Director
6. Student Representative
  - Heather Gring – Buffalo State College Student
7. City of Buffalo
  - Drew Eszak – City Planner